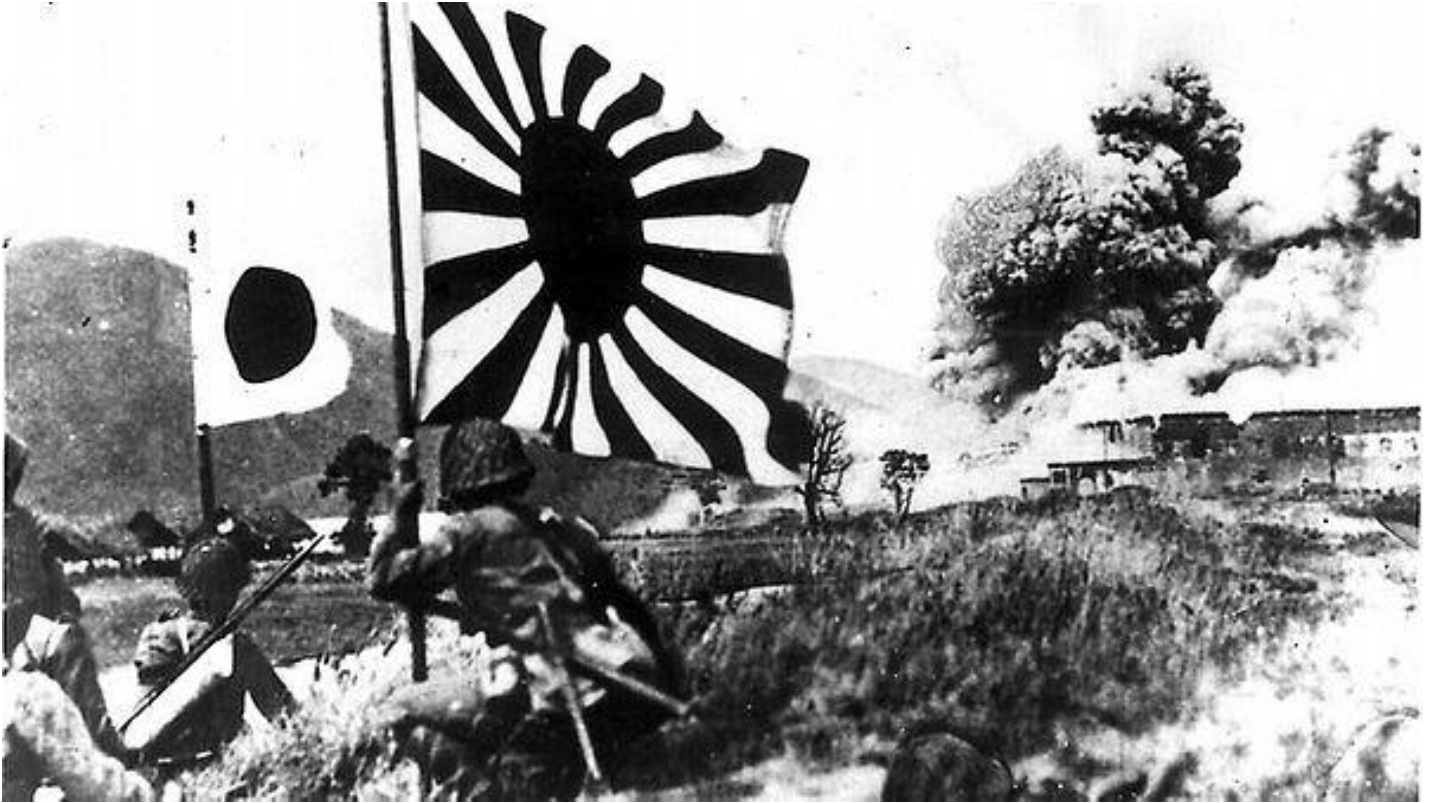


RED SUN RAMPANT



WEBQUEST Directions: Using the internet, as well as the textbook and information from class discussions, fill in the blanks correctly.

WORD BANK

Pearl Harbor

embargo

Isoroku Yamamoto

December 7, 1941

G4M Betty

Singapore

civilians

French Indochina

South East Asia

A6M Zero

brutality

allies

Hideki Tojo

aircraft carriers

infamy



1. **When war broke out in Europe in 1939, the Japanese saw a chance to grab European possessions in ____.**
2. **To protect American interests in the Pacific, President Roosevelt moved the Pacific fleet from the US mainland to the naval base at ____, Hawaii in 1940 as a display of American power.**
3. **In response to Japanese aggression, the US also initiated an ____ of war materials, such as iron, steel, and oil, to Japan in July of 1941.**
4. **By late 1941, many extreme militarists had gained power in Japan. On October 17, General ____ was appointed Prime Minister.**
5. **Admiral ____ was the Commander of the Japanese Imperial Navy.**

- 6. In a surprise attack, the Japanese attacked the American naval base at Pearl Harbor, Hawaii on ____.**
- 7. The next day, President Roosevelt told the nation that it is “a date which will live in _____,” and the US formally declared war on Japan.**
- 8. On December 11, Germany and Italy, as Japan’s _____, declared war on the United States.**
- 9. When the Japanese attacked Pearl Harbor, the American _____ were out at sea and not in the harbor.**
- 10. Combining excellent maneuverability and very long range, the Mitsubishi _____, was considered the most capable carrier-based fighter plane when it was introduced by the Japanese Imperial Navy in 1940.**
- 11. The Mitsubishi _____ twin-engine attack bomber was the most widely produced land-based bomber operated by the Japanese during World War II.**
- 12. British Prime Minister Winston Churchill called the surrender of the garrison defending the island of _____ in February 1942 “the worst disaster and largest capitulation in British history”.**
- 13. By 1942, the Japanese overran the Philippines, British colonies in Hong Kong, Burma, and Malaya, and also completed their takeover of _____.**
- 14. The Japanese invaders treated the Chinese, Filipinos, Malaysians, and other conquered people with great _____.**
- 15. In China, the Philippines, Malaysia, and elsewhere, the Japanese killed and tortured _____. They turned local people into slave laborers.**